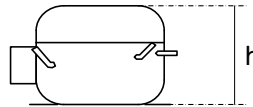


OPERATION:

Application:	L.B.P.	Max. Ambient Temp:	43°C
Refrigerant:	R134a	(1) Max. Steady Discharge Temp:	120°C
Operation:	Capillary	(1,2) Max. Peak Discharge Temp:	135°C
Cooling:	Static	Max. Steady Condensing Temp:	60°C
		(2) Max. Peak Condensing Temp:	70°C
		Max. Winding Temp:	130°C
		Max. Impurities:	30 mg
		Max. Total Compressor Water Content:	100 mg

COMPRESSOR:

Displacement:	8.10 cc	Oil Type:	Ester
Bore:	24.29 mm	(4) Viscosity:	15 cSt
Stroke:	17.48 mm	Suction Muffler:	Semi-direct
(3) Net Wt:	9.9 kg		
Case Size:	3 (h = 185.5 mm)		
Oil Charge:	295 cc		



ELECTRICAL:

Power Supply:	220 - 240V	Motor Type:	RSIR / RSCR *
Voltage Limits:	187 - 264V	Locked Rotor Current:	13.3 / 8.3 A**
Frequency:	50 Hz		
Phase:	1 ph		
		Main Winding Resistance at 25°C:	10.4 Ω
		Start Winding Resistance at 25°C:	19.8 Ω

* With Optional Run Capacitor

** Maximum current / Measured after 4 seconds

- (1) Measured 5cm. from the shell with insulated thermocouples
- (2) For transient conditions during 'Pull Down'
- (3) Net weight is with oil but without electrics
- (4) Measured at 40°C

For rated performance,
the suction line must be connected to the stub
marked 'AS' on the attached drawing.

ELECTRICAL COMPONENTS:

ZEM Starting Device:	PTC- 8100	UH Starting Device:	PTC- 3003-x
(1) ZEM Starting Device:	PTC - 7100D7	UH PTC Resistance:	14 Ω
ZEM PTC Resistance:	14 Ω	Alt. UH Starting Device:	PTC- 3001-x
		ECC Starting Device:	K 100-xx
Run Capacitor:	4.0 μF		

-x PTC code for different contact versions

-xx Protector short code

PROTECTORS:

PROTECTORS	BDG ¾	Electrica ¾
Type	AE 11 FU x	T 0490 / kk
Open °C	115 - 125 °C	125 - 135 °C
Close °C	71 - 53 °C	70 - 55 °C
U.T.C	2.80 A 70 °C	2.67 A 70 °C
Time Check Current	9.40 A	9.40 A
Max. Current	20.0 A	18.0 A
Code (if any)	FA	CH
Alt. protectors:	AF 11 FU x D7	

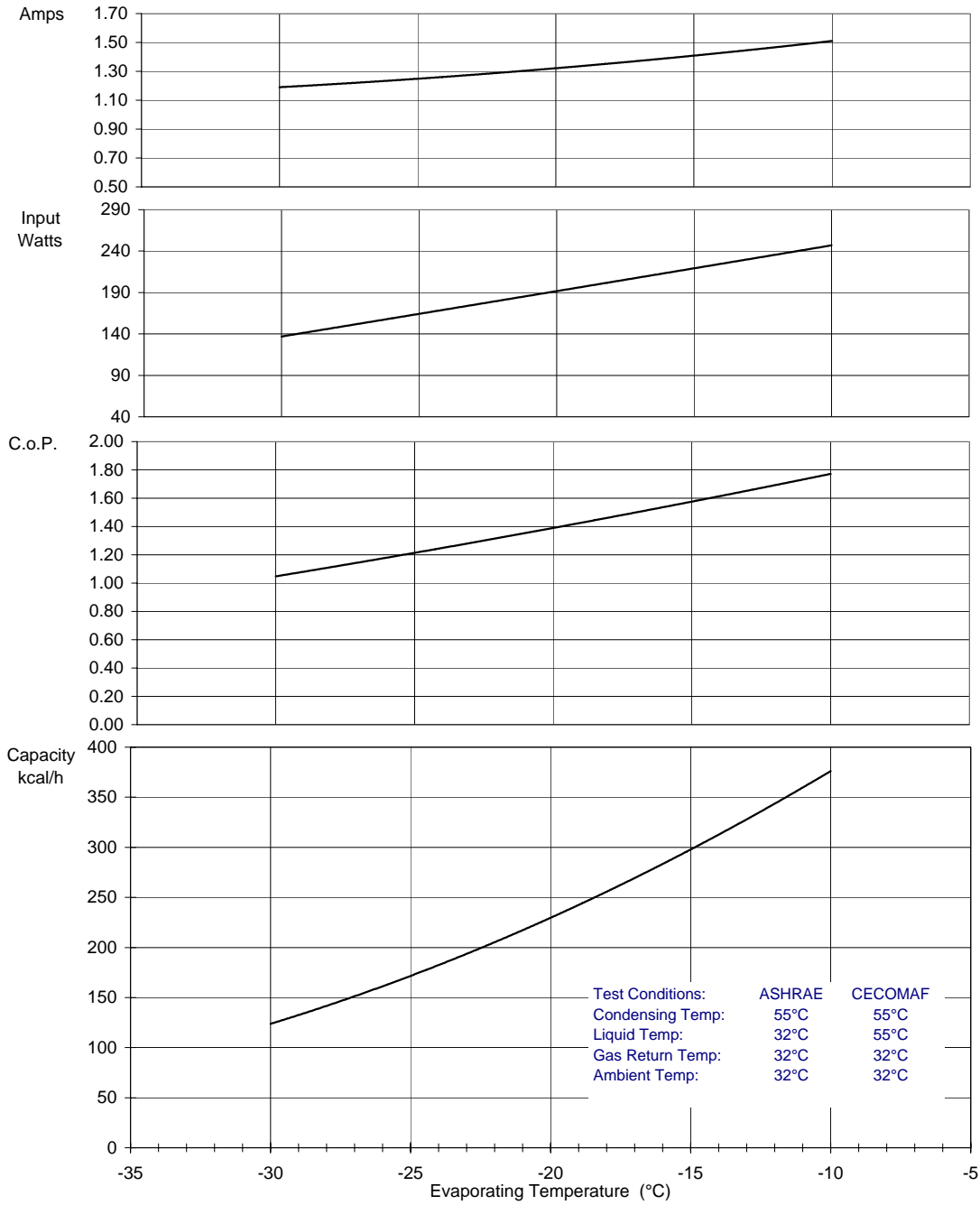
BDG 'x' Codes: 6 for terminal boards Mod.89,90
8 for terminal board Mod.91
4 for UH protector with 6.3mm fast-on
5 for UH protector with M3.5 screw

Electrica 'kk' Codes: 05 for terminal boards Mod.89,90
07 for terminal board Mod.91
C5 for UH protector with M3.5 screw
C6 for UH protector with 6.3mm fast-on

Protectors with M 3.5 screws can be used on UH electric housings type SP-1454 (with connection board) and SP-1821 (without connection board) See drawings ELECTRICAL ASSEMBLY (FOR UH) number FTC15;16;17;18.
¾ protectors with 6.3mm fast-on can only be used on UH electric housing type SP-1821 (without connection board).

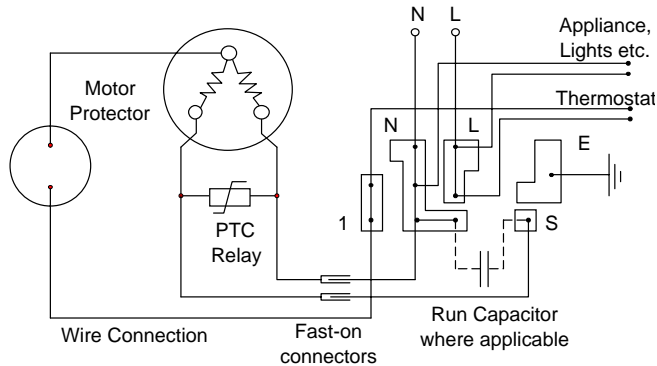
PERFORMANCE: (Graphs are at ASHRAE conditions)

220V 50Hz Without run capacitor

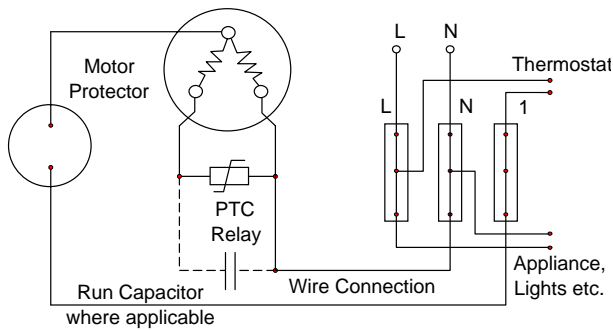


	Evaporating Temperature °C	-30	-25	-23.3	-20	-15	-10
ASHRAE:	Capacity Kcal/h	124	171	190	230	298	376
	C.o.P. W / W	1.05	1.21	1.27	1.39	1.58	1.77
CECOMAF:	Capacity W	118	162		218	282	356
	C.o.P. W / W	0.86	0.99		1.14	1.29	1.44
	Input Power W	137	164	174	192	219	247
	Current A	1.19	1.25	1.27	1.32	1.41	1.51

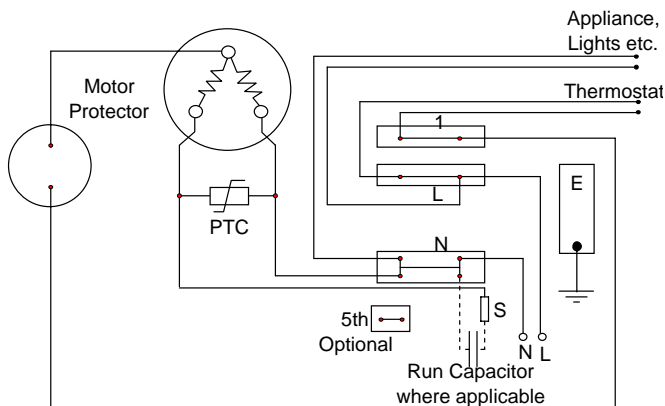
Circuit Diagram for Mod.90 Terminal Board



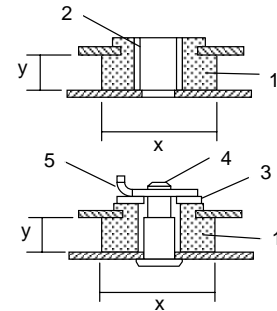
Circuit Diagram for U.H. Terminal Board



Circuit Diagram for ECC Terminal Board Frontal Version

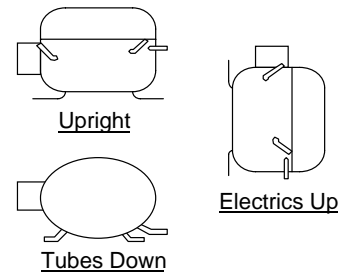


Mounting Accessories



- x = 26mm or 28.5mm
- y = 9mm or 10.3mm
- Other sizes available
- 1. Rubber grommet
- 2. Sleeve
- 3. Washer
- 4. Steel pin
- 5. Clip

Recommended Transport Positions when fitted into appliances



Compressor Label

